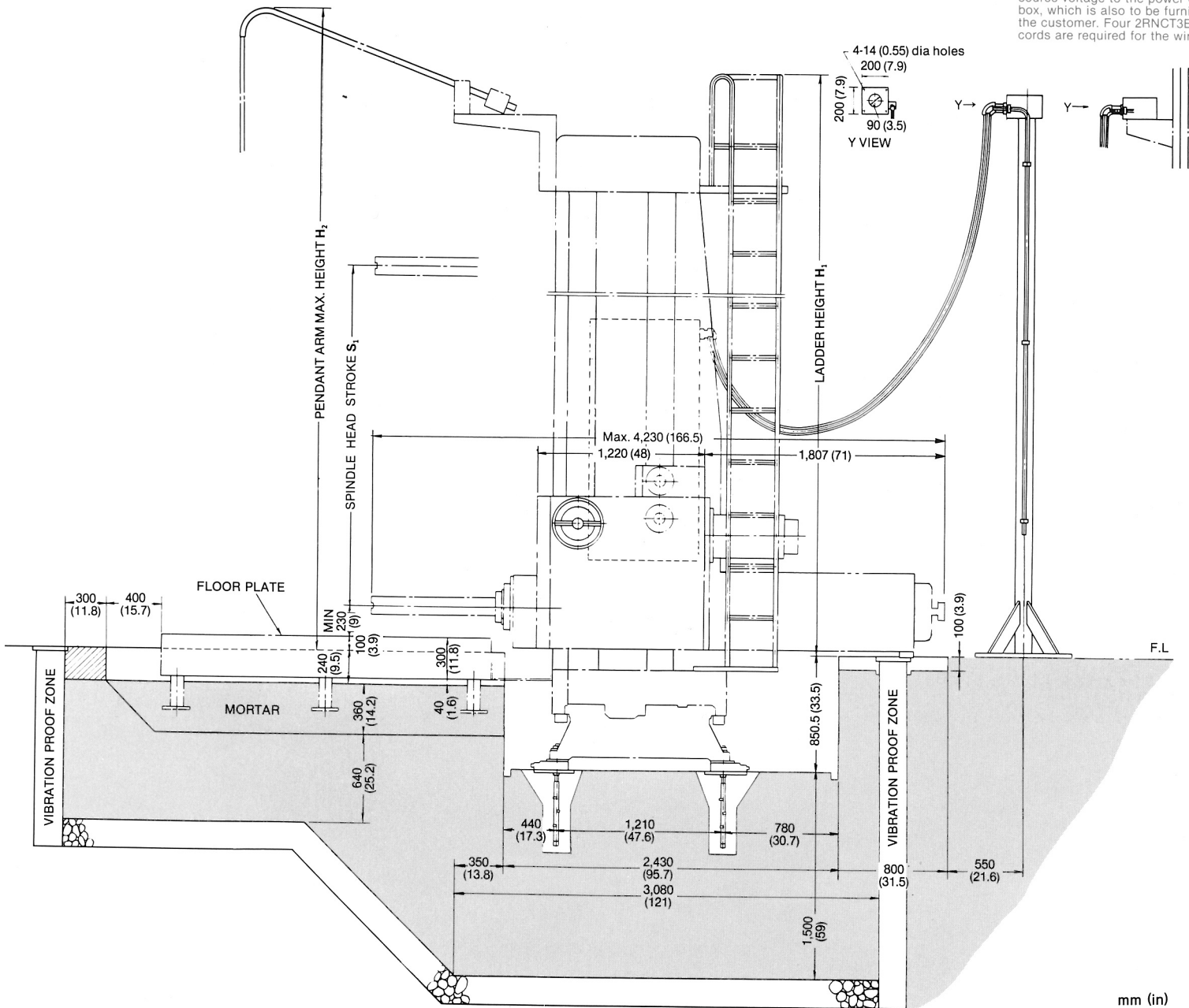


Compressed air piping with a 1/2" elbow for an air pressure of 8 — 10kgf/cm² should be supplied by the customer to this point, as well as electrical wiring for the primary source voltage to the power control box, which is also to be furnished by the customer. Four 2RNC3B (40kVA) cords are required for the wiring.

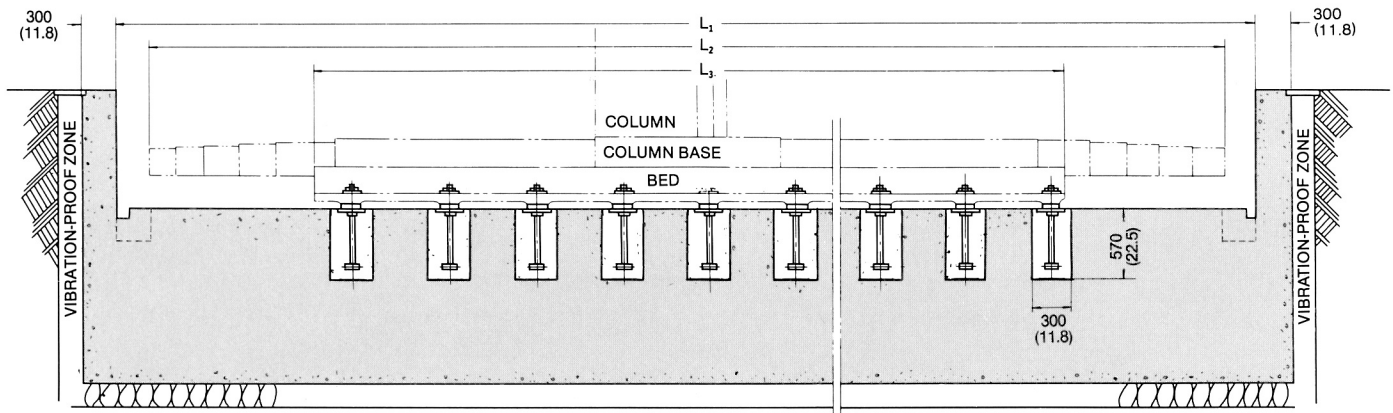
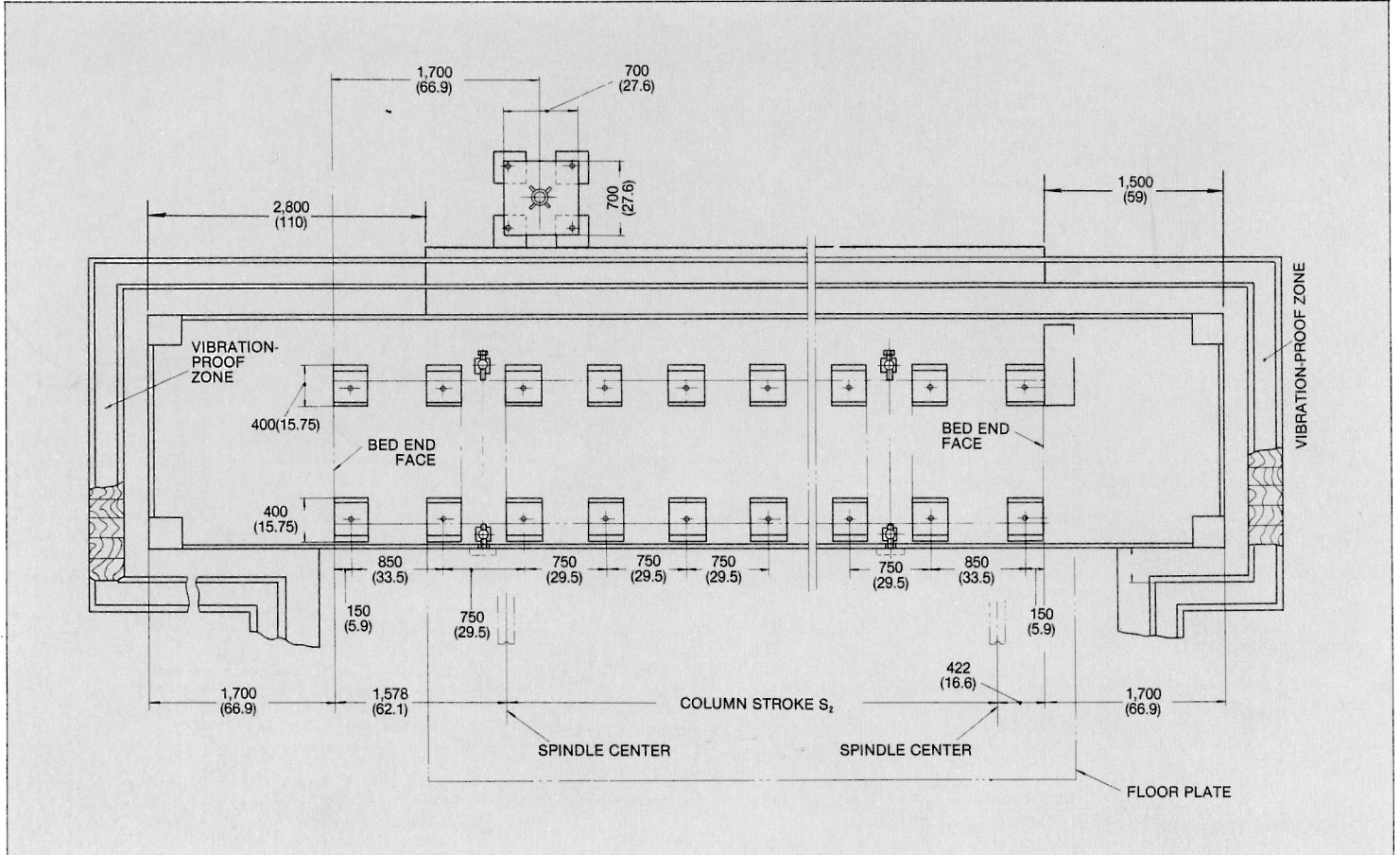


GENERAL DATA

Spindle head stroke	S_1 mm (in)	1,500 (59)	2,000 (78.7)	2,500 (98)	3,000 (118)	3,500 (138)
Height of ladder from ground	H_1 mm (in)	3,707 (146)	4,207 (166)	4,707 (185)	5,207 (205)	5,707 (225)
Pendant arm maximum height from ground	H_2 mm (in)	4,532 (178)	5,032 (198)	5,532 (218)	6,728 (265)	7,228 (285)
Moving weight	t (lbs)	17 (37,400)	17.9 (39,400)	18.8 (41,400)	19.7 (43,300)	20.6 (45,300)
Required ground strength	t/m ² (lbs/in ²)	10 (14.2)				
Load condition of foundation		Concentrated locally				
Concrete mixing ratio		Cement 1 : River sand 2 : Gravel 4				
Mortar mixing ratio		Quick-hardening cement 1 : River sand 2 : Non-shrink 1				

* We reserve the right to change all specifications without notice in order to effect improvements.

FOUNDATION PLAN



Column stroke	S_2 mm(in)	3,000(118)	4,500(177)	6,000(236)	7,500(295)	9,000(354)
Bed length	L_3 mm(in)	5,000(196.9)	6,500(255.9)	8,000(315)	9,500(374)	11,000(433)
Machine length	L_2 mm(in)	7,950(313)	9,450(372)	10,950(431)	12,450(490)	13,950(549)
Inside length of Foundation	L_1 mm(in)	8,400(330.7)	9,900(389.8)	11,400(448.8)	12,900(507.9)	14,400(566.9)