

ONLINE AUCTION

COMPLETE PLANT CLOSURE OF **WORLD CLASS CHAIN & IDLER MANUFACTURER**

TUESDAY, AUGUST 13TH, 2024 @ 10:00 AM ET (9:00 AM CT)

LATE MODEL CNC MACHINING AND FABRICATING EQUIPMENT - FEATURING 2019 MESSER METALMASTER XCEL PLASMA CUTTING TABLE, MAZAK HCN-6800-II CNC HORIZONTAL MACHINING CELL, MINSTER E2.600.60.40 & MINSTER E2.300.60.36 PRESSES, PRESS FEED EQUIPMENT, HEAT TREAT FURNACE, AMADA BAND SAW, BATCH TYPE TUMBLAST, (2) NARROW ISLE COMBI-LIFTS, WELDERS, AIR COMPRESSORS, OVER 100 LISTA CABINETS, OVER 500 SECTIONS OF PALLET RACKING, TOOLROOM, PLANT SUPPORT AND MORE! OVER 400,000 SF FACILITY!



2019
MESSER METALMASTER XCEL 8' X 45'
CUTTING AREA PLASMA CUTTING SYSTEM



2009
MAZAK HORIZONTAL MACHINING CELL CONSISTING OF
(2) MAZAK HCN-6800-II CNC HORIZONTAL MACHINING CENTERS



1 OF 2
MINSTER E2.600.60.40
STRAIGHT SIDE PRESSES



MINSTER E2.300.60.36
STRAIGHT SIDE PRESS



1 OF 2
NARROW ISLE COMBI-LIFTS
10,000 LB. CAPACITY



NIAGARA METAL FINISHERS
TEMPER FURNACE

INSPECTION: Monday, August 12TH from 9:00AM - 4:00PM CT

ASSETS LOCATION: Milwaukee, Wisconsin

REGISTER NOW:

BidSpotter

PRESTIGE EQUIPMENT AUCTIONS
35 Pinelawn Road, Suite 203W,
Melville, NY 11747
Phone: 631-249-5566
auctions@prestigeequipment.com
www.prestigeequipment.com



IN CONJUNCTION
WITH:



PLASMA CUTTING SYSTEM, PLATE LIFTER DEVICE, CNC HORIZONTAL MACHINING CELL & MORE!



2019 MESSER METALMASTER XCEL 8' X 45' CUTTING AREA PLASMA CUTTING SYSTEM

PLASMA CUTTING SYSTEM:

2019 MESSER METALMASTER XCEL 8' X 45' CUTTING AREA, (2) Plasma Cutting Torch Stations, (2) Hypertherm XPR300 X-Definition Plasma Units, (2) Hypertherm XPR300 Vented Water Injection Gas Consoles, (2) CSL200 Plasma Torch Height Ctrls., 3,000 IPM Max. Travel Speed, Heavy Duty Heat Shield Package, Telesis TMP3200 Pinstamp Marking System, Messer Global CNC Ctrl., Slagger Self Cleaning Down Draft Cutting Table, Dust Collector, S/N: MMX-CEL8-19-6634



2019 INDUSTRIAL MAGNETICS (IMI) MAGNETIC PLATE LIFTER

PLATE LIFTER DEVICE:

2019 INDUSTRIAL MAGNETICS (IMI) MAGNETIC PLATE LIFTER, Model PCP62719, 5000 Lb. Maximum Lift Capacity, 2050 Lb. Maximum Inner Capacity, S/N: LA62717

CNC HORIZONTAL MACHINING CELL:

(2) MAZAK HCN-6800-II CNC HORIZONTAL MACHINING CENTERS, Matrix Nexus CNC Control, Travels: X-41.34", Y-35.43", Z-38.58", 36-Station Mazatech Multi-Pallet Pool, 330-Position High Rise ATC Tool Hive, CAT 50 Taper, 10,000 RPM, Mazak Superflow T8/1000 Thru-Spindle Coolant, Chip Conveyor, [2009]



2009 MAZAK HCN-6800-II CNC HORIZONTAL MACHINING CENTERS



ADVANCE 6000 LB. DIE HANDLER

BATCH TYPE TUMBLAST:

WHEELABRATOR 22-SUPER BATCH TYPE TUMBLAST, 22 Cubic Ft., Tote Box Loader, Discharge Conveyor, Torit Dust Collector, S/N: A-109781/A-109781-01 [Upgrading by Wheelabrator 2015]



WHEELABRATOR 22-SUPER BATCH TYPE TUMBLAST

PAINT BOOTH:

COLMET 10' X 18' PAINT BOOTH WITH OVERHEAD CONVEYOR



BROWN & SHARPE 7.10.7 COORDINATE MEASURING MACHINE



HANSFORD DIE HANDLERS

DIE HANDLERS:

ADVANCE 6000 LB. DIE HANDLER
HANSFORD DIE HANDLERS

STRAIGHTSIDE & MECHANICAL PRESSES & OBI & GAP FRAME PRESSES

1 OF 2



MINSTER E2.600.60.40 STRAIGHT SIDE PRESSES **MINSTER E2.300.60.36 STRAIGHT SIDE PRESS**



DANLY E2-400-51-66 STRAIGHT SIDE MECHANICAL PRESS



DANLY H2-400-72-42 STRAIGHT SIDE MECHANICAL PRESS

STRAIGHTSIDE & MECHANICAL PRESSES:

MINSTER E2-600-60-42 STRAIGHT SIDE PRESS, 600 Ton, 60" x 42" Bed, 4" Stroke, 25 SPM, 34" Shut Height, S/N: 13608

MINSTER E2-600-60-42 STRAIGHT SIDE PRESS, 600 Ton, 60" x 42" bed, 4" Stroke, 12" Adjustment, 25 SPM, 34" Shut Height, 25" w x 14.88" h Windows, Servo Feeder, S/N: 16753

MINSTER E2-400-42-42 STRAIGHT SIDE PRESS, 400 Ton, 42" x 42" Bed, 8" Stroke, 6" Adjustment, 38" Shut Height to Bed, 8" Bolster, 44 SPM, S/N: 23377

MINSTER E2-300-60-32 STRAIGHT SIDE PRESS, 300 Ton, 60" x 36" Bed, 4" Stroke, 6" Adjustment, 36" Shut Height, 55-110 SPM, S/N: E2-#00-24603

CLEARING E-2-600-72 STRAIGHT SIDE PRESS, 600 Ton, 10" Stroke, 6" Adjustment, 20" Open Height

CLEARING S2-250-60-42 STRAIGHT SIDE PRESS

DANLY SS1-400-36-36, STRAIGHT SIDE PRESS, 400 Ton, 8" Stroke, 3" Adjustment, 30" Shut Height, 50 SPM, S/N: 52054404

DANLY E2-400-51-66 STRAIGHT SIDE PRESS, 400 Ton, 6" Stroke

DANLY H2-400-72-42 STRAIGHT SIDE PRESS, 400 Ton

DANLY 2-100-28-38 STRAIGHT SIDE PRESS, 100 Ton

CINCINNATI PRESS BRAKE MODEL 36, 1000 Ton, Orthinghaus Pneumatic Clutch/Brake Conversion, Wintress WPC 2000 Control

BLISS 26 800 TON KNUCKLE JOINT PRESS, 36 x 40 Bolster, 28 x 33 Ram, 5" Stroke, 29" Shut Height, 34 SPM, Loadgard Trend Series 2, T-30658-73020-1941

BLISS 26 800 TON KNUCKLE JOINT PRESS, 26 x 32 Bolster, 2.5" Stroke, 20" Shut Height, 1/2" Adjustment, 33 SPM, Loadgard Trend Series 2, #T3328U

BLISS 28 1000 TON KNUCKLE JOINT PRESS, 26 x 32 Bolster, 2.5" Stroke, 20" Shut Height, 1/2" Adjustment, 33 SPM, Loadgard Trend Series 2, #T3328U

VERSON S2800 168X54T, 800 Ton, 12" Stroke, 16 SPM, 12" Power Adj., 25" S.H., 54" x 168 Bed, 22" x 20" Windows, Wintress Smartpac 2 Controls, Shadow 8 Light Curtains



CINCINNATI #36 MECHANICAL PRESS BRAKE



VERSON S2800 168X54T STRAIGHT SIDE PRESS



GREENARD C-FRAME 40 TON PRESSES



BLISS 26 800 TON KNUCKLE JOINT PRESS

3 AVAILABLE

2 AVAILABLE

OBI & GAP FRAME PRESSES:

200 TON DANLY OBI GEARED PRESS, 8" Stroke, 24" Shut Height, 4.5" Adjustment, 60 SPM

DANLY 75 TON GEARED OBI PRESS

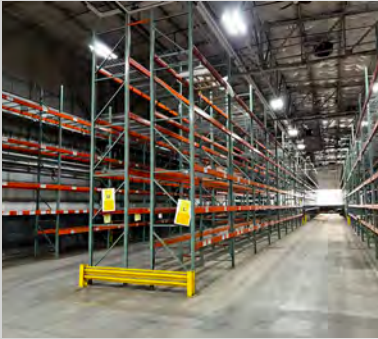
BLISS C-60 OBI PRESS

GREENARD C-FRAME 50 TON PRESS, New 1999

(2) GREENARD C-FRAME 40 TON PRESSES, New 2000

(3) NEFF, 12 TON C-FRAME PRESSES

PALLET RACKING, AIR COMPRESSORS, COMBI LIFTS, CANTILEVER RACKING, PLANT SUPPORT & MORE!



OVER 400 SECTIONS OF PALLET RACKING



VIEW OF CANTILEVER RACKING



1 OF 2

NARROW ISLE COMBI-LIFTS 10,000 LB. CAPACITY



TEREX MAN LIFT



HURST BOILER



OVER 100 LISTA CABINETS



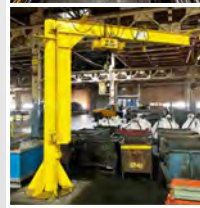
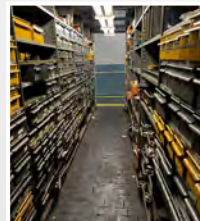
INGERSOLL RAND R75N AIR COMPRESSOR



BLISS C60 OBI PRESS



DANLY 75 TON GEARED OBI PRESS



ONLINE AUCTION

COMPLETE PLANT CLOSURE OF

WORLD CLASS CHAIN & IDLER MANUFACTURER

TUESDAY, AUGUST 13TH, 2024 @ 10:00 AM ET (9:00 AM CT)

INSPECTION: Monday, August 12TH from 9:00AM - 4:00PM CT

ASSETS LOCATION: Milwaukee, Wisconsin

REGISTER NOW:

BidSpotter

PRESTIGE EQUIPMENT AUCTIONS
35 Pinelawn Road, Suite 203W,
Melville, NY 11747
Phone: 631-249-5566
auctions@prestigeequipment.com
www.prestigeequipment.com



IN CONJUNCTION WITH:

