

# ONLINE AUCTION

**OVER  
800 LOTS!**

Rex Companies, Inc. –

## COMPLETE CNC FABRICATION & MACHINE SHOP



**Tuesday, March 18 at 10:00 AM ET**    **Location: Newport News, Virginia**

FEATURING 2019 BYSTRONIC 4KW FIBER LASER WITH BYLOADER3015, DYTAN MATERIAL STORAGE RACK AND DELIVERY SYSTEM, ACCURPRESS 7254 5-AXIS CNC PRESS BRAKE, TRUMPF V1300 8-AXIS CNC PRESS BRAKE, PRESS BRAKE TOOLING, GLEASON PFAUTER PSA300 CNC GEAR SHAPER, MAKINO A99 HORIZONTAL MACHINING CENTER, MAZAK CNC LATHES, (10) MILLER WELDERS, HYPER THERM PLASMA CUTTER, (20) DEMMELER AND ACORN WELDING TABLES AND ACCESSORIES, NORDSON POWDER BOOTH, REMSTAR STORAGE AND RETRIEVAL UNITS, HURCO VMX64 AND VM1 CNC VMCS, ROLLING STOCK, LARGE QUANTITY OF VIDMAR CABINETS, RAW MATERIAL, SHOP SUPPORT AND MORE!

**\*\*ACCEPTING  
PRE-AUCTION  
OFFERS ON  
MAJOR  
MACHINES\*\***



**2019**  
BYSTRONIC BYSMART 3015 4KW FIBER LASER



**8-AXIS CNC**  
TRUMPF TRUMABEND V1300  
CNC PRESS BRAKE



DYTAN TYPE 2002 CANTILEVER  
MATERIAL STORAGE & DELIVER  
SYSTEM



HURCO VMX64/40T CNC VERTICAL  
MACHINING CENTER

**Inspection: Monday, March 17 9:00 AM ET - 4:00 PM ET**

Contact **Frank DiSalvo** For More Info at **631-249-5566** or **frank@prestigeequipment.com**

**PRESTIGE EQUIPMENT AUCTIONS**  
35 Pinelawn Road, Suite 203W,  
Melville, NY 11747  
Phone: 631-249-5566  
auctions@prestigeequipment.com  
www.prestigeequipment.com



In Conjunction  
With:



2019



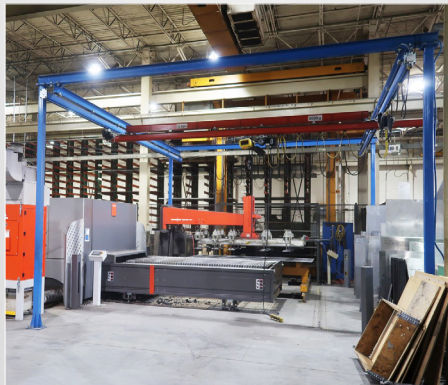
**BYSTRONIC BYSMART 3015 4KW FIBER LASER WITH BY-LOADER**

### FIBER LASER SYSTEM

**BYSTRONIC BYSMART 3015 4KW FIBER LASER**, 60" x 120" Dual Pallet Changer, Dust Collector, S/N: LA19130-G142 [2019], By-Loader 3015 Material Loader

**DYTAN TYPE 2002 CANTILEVER MATERIAL STORAGE AND RETRIEVAL SYSTEM**, 2.7 Ton Max. Weight Per Shelf, (5) Sections x (17) Shelves, 5' x 10' Maximum Sheets, 3 Ton Storage and Retrieval Crane System, 3 Ton Material Storage Inlet-Table Roller Conveyor, 3 Ton Material Delivery Cart, S/N: 233.282 (no material)

**OVERHEAD CRANE SYSTEM (FREE-STANDING) ½ TON INGERSOL RAND HOIST**, Power Bridge, Power Trolley, Pendant Control, Approx. 15' Span, 25' Bridge Travel, 10' Under Hook



**DYTAN TYPE 2002 CANTILEVER MATERIAL STORAGE AND DELIVER SYSTEM ½ TON OVERHEAD CRANE SYSTEM**



**5-AXIS CNC**

**ACCURPRESS 7254 CNC PRESS BRAKE**



**8-AXIS CNC**

**TRUMPF TRUMABEND V1300 CNC PRESS BRAKE**

### CNC PRESS BRAKES:

**TRUMPF TRUMABEND V1300 8-AXIS CNC PRESS BRAKE**, 143 Ton, 8.46" Stroke, 120" Overall Bed Length, (6) Axis Back Gauge, Crowning Bed, S/N: B0504A0188 (2006)

**ACCURPRESS 7254**, 25 Ton 5-Axis Press Brake, 48" Overall Bed Length, ETS 3000 5-Axis CNC Control, 4-Axis Back Gauge, S/N: 9194 (2006)

**LARGE QUANTITY OF PRESS BRAKE DIES**



**MAKINO A99 CNC HORIZONTAL MACHINING CENTER WITH 12-STATION FMS SYSTEM LOAD/UNLOAD**

**CNC MACHINING CENTERS, CNC TURNING CENTERS & CNC LATHES:**

**MAKINO A99 CNC HORIZONTAL MACHINING CENTER**, Makino Pro 3 CNC Control, 50-Taper Spindle, [16] 31" x 31" Pallets, B-Axis 1 Degree, 12-Station FMS System with Load/Unload, Probing, 188-Position Automatic Tool Changer, Coolant, S/N: A99-104

**HURCO VMX64/40T CNC VERTICAL MACHINING CENTER**, Hurco Ultimax Dual Screen CNC Control, w/ 34" x 65" Table, X-64", Y-33.9", Z-29.9", Aluminum Sub Plate, 40-Taper Spindle, 40-Position ATC, S/N: H-64078 (2005)

**HURCO VM1 CNC VERTICAL MACHINING CENTER**, w/ 14" x 30" Table, 40-Taper Spindle, 16-Position Automatic Tool Changer, Hurco Ultimax Dual Screen CNC Control, S/N: HV11776 (2006)

**REIDEN BF3L50151 3-AXIS CNC UNIVERSAL BED MILL**, w/ 24" x 63" T-Slotted Work Table, Taper Spindle

**MAZAK DUAL TURN 20 SPINDLE CNC LATHE**, Mazatrol T Plus CNC Control, w/ [2] Kitagawa 8" Chucks, 12.6" Max Swing. 10" Standard Cutting Diameter, 49.21" Distance Between Spindle Faces, 2.4" Spindle Bore, Spindle Speeds to 4,750 RPM, [2] Collet Chucks, [2] 12-Station ATC, Chip Conveyor, LNS Quick Load Bar Feeder w/ Spindle Liners, 20 HP, S/N: 131660

**MAZAK INTEGREGX 35 CNC TURNING CENTER**, Mazatrol 640MT CNC Control, w/ 12" 3-Jaw Hydraulic Chuck, 22.64" Swing, 60" Between Centers, B-Axis +/- 90 Degrees, C-Axis .01 Degree, 6,000 RPM, 40 ATC, Tailstock, Chip Conveyor, LNS Quick Load Servo S2 Magazine Bar Feeder, Spindle Liners, S/N: 144586



**HURCO VMX-64 CNC VERTICAL MACHINING CENTER**



**HURCO VM-1 CNC VERTICAL MACHINING CENTER**



**MAZAK INTEGREGX 35 CNC TURNING CENTER**



**MAZAK DUAL TURN 20 SPINDLE CNC LATHE**



**GLEASON-PFAUTER PSA300 CNC GEAR SHAPER**

**CNC GEAR SHAPER:**

**GLEASON PFAUTER PSA300 CNC GEAR SHAPER**, Siemens Sinumerik CNC Control, 300 mm Max Workpiece Diameter, 6 mm Max Module, 1000 kg. Max Workpeice Weight, Coolant, S/N: 13165 (2000)



**CHEVALIER FSG-2460TX HORIZONTAL SURFACE GRINDER**

**GRINDING & FINISHING EQUIPMENT:**

**CHEVALIER FSG-2460TX HORIZONTAL SURFACE GRINDER**, 24" x 48" Magnetic Chuck, O.S. Walker Control, Coolant, S/N: J485C001

**SHIGIYA G-30ND CNC CYLINDRICAL GRINDER**, Fanuc Series 18-T CNC Control, 11.81" Swing, 39.4" Between Centers, 150 kg Weight Capacity, S/N: 070266

**FILTER 1 DUSTRON DEBURRER & GRIND DUST FILTRATION BOOTH**, Approx. 24' Wide x 17' Deep x 7-1/2' High, S/N: 9-28-238

**TRINCO 48/BP 2-HOLE REACH-IN TYPE SHOT BLAST CABINET**, w/ Reclaim, S/N: 66098-8

**TIMESAVERS 3121-13-04 SERIES 3100 36" PASS THROUGH WET / DRY BELT SANDER**, w/ E700 Control, S/N: 251372HDCMW10 (2006)



**FILTER 1 DUSTRON DEBURRER & GRIND DUST FILTRATION BOOTH**



**SHIGIYA G-30ND CNC CYLINDRICAL GRINDER**



**TRINCO 48/BP SHOT BLAST CABINET**



**TIMESAVERS 3121-13-04 SERIES 3100 36" PASS THROUGH WET / DRY BELT SANDER**



**MONTGOMERY 4825H INITIAL PINCH TYPE BENDING ROLL**



**ERCOLINA TB50 TOP BENDER BENDING MACHINE**

**BENDING ROLL AND TUBE BENDER:**

**MONTGOMERY 4825H INITIAL PINCH TYPE BENDING ROLL**, 4' x 1/4", approx. 6" Roll Diameter, 7.5 HP, 4,600 Lbs. w/ Foot Pedal Forward & Reverse Control & Pedestal Push Button Controls, Digital Readouts, S/N: 094036

**ERCOLINA MDL. TB50 TOP BENDER BENDING MACHINE**, 2-1/2" Mild Steel Capacity, Foot Pedal Digital Readout Control, Assorted Dies, S/N: 5013146 (2013)



**EISENMANN 5-STAGE WASH TREATMENT SYSTEM**



**NORDSON 15-GUN AUTOMATIC POWDER PAINT BOOTH**



**EISENMANN MANUAL POWDER SPRAY BOOTH**

**POWDER COAT PAINT LINE & GLUE EQUIPMENT:**

**NORDSON 15-GUN AUTOMATIC POWDER PAINT BOOTH**, 4' x 7' Opening, Reclaim I Control Integrated Control System

**EISENMANN MANUAL POWDER SPRAY BOOTH**, Approx. 4' x 6' Opening, Nordson Encore Spray Gun, Gema Easytronic Control Unit, Reclaim

**EISENMANN 5-STAGE WASH TREATMENT SYSTEM**, w/ Eisenmann Dry CXX, Core Oven, Cool Down System, Conveyor & Hooks, Allen Bradley Panelview Plus 1250 Control

**CONTROLLED PYROLYSIS PTR5NT2799 5' WIDE X 6' HIGH X 4' DEEP GAS FIRED CLEANING FURNACE**, w/ 300,000 BTU, Control, S/N: N/A

**NORDSON MDL. 8102878 VERSAPAIL ADHESIVE MELTER**, w/ Digital Readout, S/N: LV10C01303 (2010; New)

**NORDSON LS10E PRE-MELTERS**, (6) Available, New Never Used



**CONTROLLED PYROLYSIS PTR5NT2799 GAS FIRED CLEANING FURNACE**



**NORDSON 8102878 VERSAPAIL ADHESIVE MELTER**



**(6) NORDSON LS10E PRE-MELTERS**

**(2) AVAILABLE**



**REMSTAR SHUTTLE XP-250-1250X864-UL STORAGE & RETRIEVAL SYSTEM**



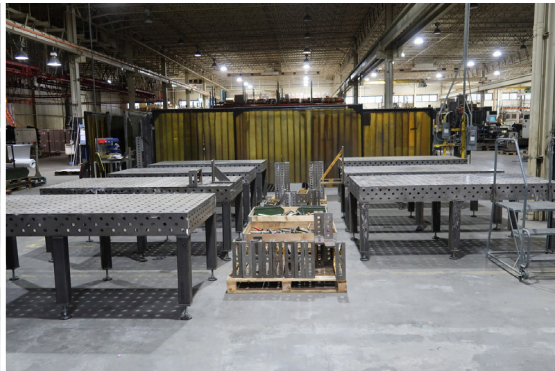
**REMSTAR SHUTTLE 1250-X825NT STORAGE & RETRIEVAL SYSTEM**

**STORAGE & RETRIEVAL SYSTEMS:**

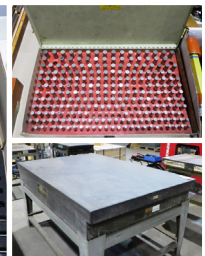
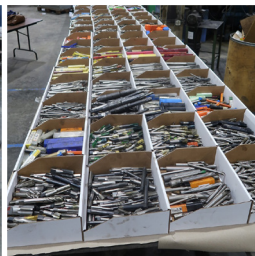
**REMSTAR SHUTTLE XP-250-1250X864-UL STORAGE & RETRIEVAL SYSTEM,** Approx. [50] Storage Shelves, Digital Control, S/N: 07006032/002 (2007)

**REMSTAR MDL. SHUTTLE XP-250-1250X864-UL STORAGE & RETRIEVAL SYSTEM,** Approx. [50] Storage Shelves, Digital Control, S/N: 07006032/001 (2007)

**REMSTAR SHUTTLE 1250-X825NT STORAGE & RETRIEVAL SYSTEM,** Approx. [50] Storage Shelves, S/N: 99.003315/006 (missing parts)



**PRECISION WELDING TABLES AND ACCESSORIES**



**LARGE ASSORTMENT OF TOOLING & INSPECTION**



**9,000 LB.**

**TOYOTA 7FBCU45 ELECTRIC FORKLIFT TRUCK**



**GENIE 2-34/22N ELECTRIC ARTICULATING BOOM LIFT**



**HINO 268 26' BOX TRUCK**



**6,500 LB.**

**YALE FORKLIFT TRUCK**



**QUINCY QGV-100 100HP ROTARY SCREW TYPE AIR COMPRESSOR**



**REIDEN BF3L50151 3-AXIS CNC UNIVERSAL BED MILL**



**KASTO TWIN A2 AUTOMATIC HORIZONTAL BAND SAW**



**DUMP HOPPERS & TOMBSTONES**



**VIEW OF MILLER & LINCOLN WELDERS**



# ONLINE AUCTION

**Rex Companies, Inc. –  
COMPLETE CNC FABRICATION  
& MACHINE SHOP**



**Tuesday, March 18 at 10:00 AM ET**    **Location: Newport News, Virginia**

**Inspection: Monday, March 17 9:00 AM ET - 4:00 PM ET**

**Contact Frank DiSalvo For More Info at 631-249-5566 or [frank@prestigeequipment.com](mailto:frank@prestigeequipment.com)**

**PRESTIGE EQUIPMENT AUCTIONS**  
35 Pinelawn Road, Suite 203W,  
Melville, NY 11747  
Phone: 631-249-5566  
[auctions@prestigeequipment.com](mailto:auctions@prestigeequipment.com)  
[www.prestigeequipment.com](http://www.prestigeequipment.com)



In Conjunction  
With:



**View Full Lot Catalog & Information at: [www.prestigeequipment.com/auction/rex-companies/](http://www.prestigeequipment.com/auction/rex-companies/)**